

## LED 地埋灯 LED underground lamp

LED地埋灯采用精密铸铝灯体，不锈钢面板或铝合金面板。抗震，防潮，耐高温，采用优质加厚钢化玻璃，橡胶密封圈，环氧树脂灌封，使灯具的防水性能达到IP67以上，集团公司地埋灯采用专利偏光转角设计，可配合特定环境照明的要求。广泛应用于商场、大厦、商业步行街、剧院、停车场、绿化带公园、雕塑、桥梁等景观亮化照明。

The LED underground lamp adopts precision cast aluminum body, stainless steel panel or aluminum alloy panel, which is earthquake resistance, moisture resistance and high temperature resistance. It adopts high quality thickened toughened glass, rubber sealing ring and epoxy resin filling to make the water-proof performance of the lamp more than IP67. Our company's underground lamp adopts the patented polarized corner design, which can meet the requirements of specific environmental lighting, which is widely used in shopping malls, buildings, commercial pedestrian streets, theaters, parking lots, green belt parks, sculptures, bridges and other landscape lighting.



SO-LH-032



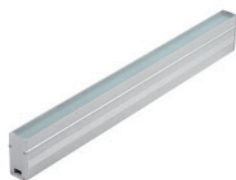
SO-LH-033



SO-LH-034



SO-LH-038



SO-LH-035



SO-LH-036



SO-LH-037

## LED 水下投光灯 LED underwater floodlight

高压压铸铝合金灯壳，耐腐蚀。厚高强度钢化安全玻璃。高质量耐热硅橡胶密封圈，密封性能好，纯铝散热器，能适应各种温湿度环境，灯具电器一体化，造型轻巧美观，安装简单

High pressure die-casting aluminum alloy lamp shell, corrosion-resistant. Thick and high-strength tempered safety glass. High quality heat-resistant silicone rubber sealing ring, good sealing performance. Pure aluminum radiator, can adapt to various temperature and humidity environment. Lamp electrical integration, light and beautiful shape, simple installation



SO-LH-039



SO-LH-040



SO-LH-041



SO-LH-042



SO-LH-043



SO-LH-044



SO-LH-045

