

## LED 泛光照明 LED flood light

时尚、现代的外观设计，使灯具也成为一件艺术品，与环境完美结合。灯具主要材料采用高强度压铸铝材料，表面抗老化静电喷塑处理，自洁、抗腐蚀性强。钢化玻璃面盖，强度高、耐冲击。灯具可配置白光或单色RGB，灯光效果华丽，色纯，变化功能强大。

The fashionable and modern appearance design makes the lamps become a work of art, perfectly combining with the environment. The main materials of the lamps are high strength die-casting aluminum materials, and the surface is anti-aging and static plastic spraying, which is self-cleaning and corrosion-resistant. Toughened glass cover, is high strength and impact resistance. The lamp can be equipped with white light or monochromatic RGB, with gorgeous lighting effect, pure color and powerful change function.



## LED 隧道灯 LED tunnel light

LED隧道灯具是一款造型美观、功能实用、耐候性强的多功能隧道灯具；灯具采用压铸铝工艺及铝合金成型工艺；结构牢固，抗冲击性强；散热性能可在隧道苛刻的工作环境中保证灯具持久工作；高效可靠的恒流电源可使灯具工作稳定、寿命更长；此款灯具还可作为加油站照明、收费站照明等顶棚工作环境。

LED tunnel lamp is a multifunctional tunnel lamp with beautiful shape, practical function and strong weather ability. The luminaire adopts die casting aluminum technology and aluminum alloy forming technology, with firm structure and strong impact resistance. The heat dissipation performance can ensure the lamp to work for a long time in the harsh working environment of the tunnel, and the efficient and reliable constant current power supply can make the lamp work stably and have a longer life. This lamp can also be used as a ceiling working environment for gas station lighting and toll station lighting.





## LED 数码管

LED digital tube

较高的透光性能，均匀的混光效果。国际一流品牌的高性能LED芯片。多层防护，保证了灯具更可靠的防水性能。简易的支架安装，适合更广的安装环境。铝合金底结构，表面氧化处理，高分子树脂封装，PC外罩，使用更安全；更防水，耐用。外观线条流畅，美观亮丽。

It has high light transmission performance, uniform light mixing effect, which adopts high-performance LED chip of international first-class brand, and has multi-layer protection, ensuring more reliable waterproof performance of lamps. Simple bracket installation is suitable for a wider installation environment. Aluminum alloy bottom structure with surface oxidation treatment, polymer resin package and PC cover lead to safer, more waterproof and durable use. The appearance is smooth and beautiful.



SO-LH-013

SO-LH-014

SO-LH-015

SO-LH-016

## LED 瓦楞灯

LED corrugated lamp

形态美观、富于现代感的灯体造型，采用辐射式散热，散热效果好；采用进口光源，亮度高，光效柔和，有效的解决了光污染问题。适用于古典建筑、桥梁等提供连续均匀的刷色或色彩变幻的效果！

It has beautiful and modern lamp shape, which adopts radiating heat dissipation, with good heat dissipation effect, and import light source, with high brightness and soft light effect, which effectively solves the problem of light pollution. It is suitable for classical buildings, bridges, etc., to provide continuous and uniform color brushing or color changing effect.



SO-LH-017

SO-LH-018

SO-LH-019





## LED 点光源

LED point source

产品小巧精致，铝材制作。散热性能优越，适用性强。

产品采用进口光源，确保高亮度。外置恒流驱动电源，性能稳定。

该系列产品推荐使用单色常亮效果，使用寿命5万小时。

适用于展厅、博物馆、办公室的局部照明。同时用于室内珠宝服装、橱柜产品的打光。

The product is small and exquisite, and is made of aluminum. Excellent heat dissipation performance and strong applicability.

The product adopts imported light source to ensure high brightness. External constant current drive power supply, with stable performance.

This series of products is recommended to use monochromatic constant bright effect, with a service life of 50000 hours.

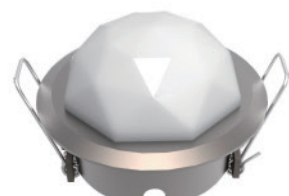
It is suitable for local lighting of exhibition hall, museum and office. At the same time, it is used to polish interior jewelry, clothing and cabinet products.



SO-LH-020



SO-LH-021



SO-LH-022



SO-LH-026



SO-LH-023



SO-LH-024



SO-LH-025

## LED 洗墙灯

LED wall washing lights

独特新颖的、富于现代感的灯体具有超强的散热效果；最先在LED灯具使用防眩光设计，有效的解决了光污染问题。

适用于建筑、桥梁、河堤、橱窗、舞台等提供连续均匀的刷色或色彩变幻的效果！

Unique and novel lamp body with modern sense has super heat dissipation effect. Anti-glare design is first used in LED lamps, which effectively solves the problem of light pollution. It is suitable for buildings, bridges, riverbanks, windows, stages, etc. to provide continuous and uniform color brushing or changing effects.



SO-LH-027



SO-LH-028



SO-LH-029



SO-LH-030



SO-LH-031





## LED 地埋灯 LED underground lamp

LED地埋灯采用精密铸铝灯体，不锈钢面板或铝合金面板。抗震，防潮，耐高温，采用优质加厚钢化玻璃，橡胶密封圈，环氧树脂灌封，使灯具的防水性能达到IP67以上，集团公司地埋灯采用专利偏光转角设计，可配合特定环境照明的要求。广泛应用于商场、大厦、商业步行街、剧院、停车场、绿化带公园、雕塑、桥梁等景观亮化照明。

The LED underground lamp adopts precision cast aluminum body, stainless steel panel or aluminum alloy panel, which is earthquake resistance, moisture resistance and high temperature resistance. It adopts high quality thickened toughened glass, rubber sealing ring and epoxy resin filling to make the water-proof performance of the lamp more than IP67. Our company's underground lamp adopts the patented polarized corner design, which can meet the requirements of specific environmental lighting, which is widely used in shopping malls, buildings, commercial pedestrian streets, theaters, parking lots, green belt parks, sculptures, bridges and other landscape lighting.



SO-LH-032



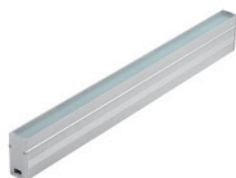
SO-LH-033



SO-LH-034



SO-LH-038



SO-LH-035



SO-LH-036



SO-LH-037

## LED 水下投光灯 LED underwater floodlight

高压压铸铝合金灯壳，耐腐蚀。厚高强度钢化安全玻璃。高质量耐热硅橡胶密封圈，密封性能好，纯铝散热器，能适应各种温湿度环境，灯具电器一体化，造型轻巧美观，安装简单

High pressure die-casting aluminum alloy lamp shell, corrosion-resistant. Thick and high-strength tempered safety glass. High quality heat-resistant silicone rubber sealing ring, good sealing performance. Pure aluminum radiator, can adapt to various temperature and humidity environment. Lamp electrical integration, light and beautiful shape, simple installation



SO-LH-039



SO-LH-040



SO-LH-041



SO-LH-042



SO-LH-043



SO-LH-044



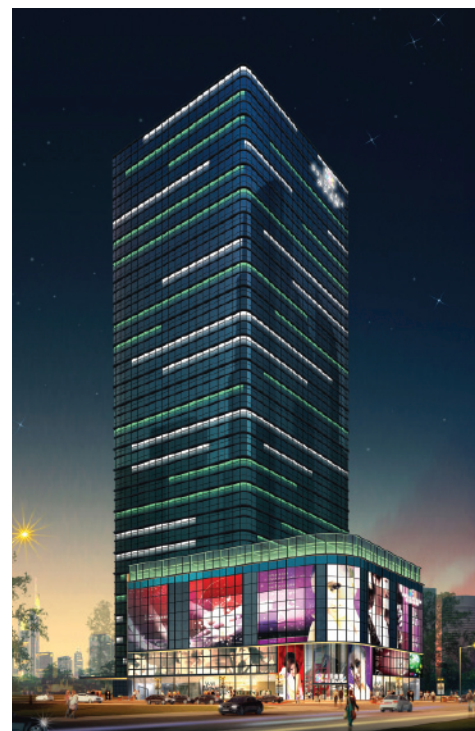
SO-LH-045







SO-LH-046



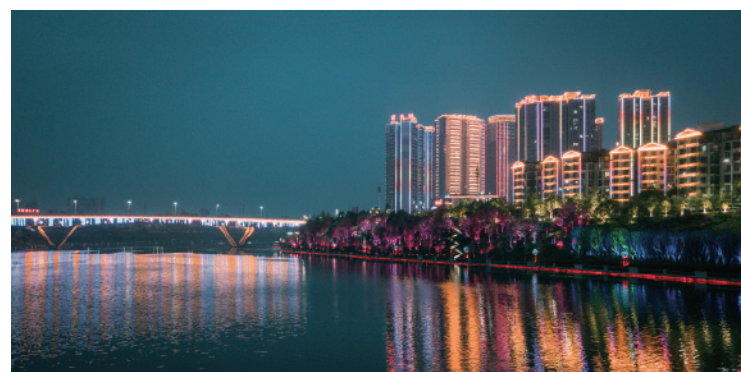
SO-LH-047



SO-LH-052



SO-LH-048



SO-LH-049



SO-LH-050



SO-LH-051



SO-LH-053